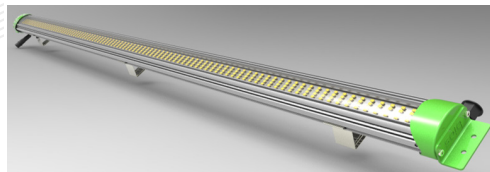
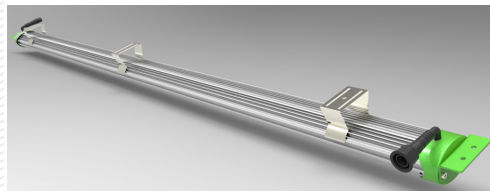
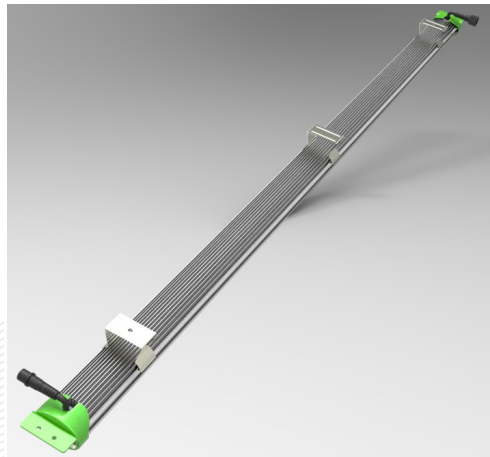
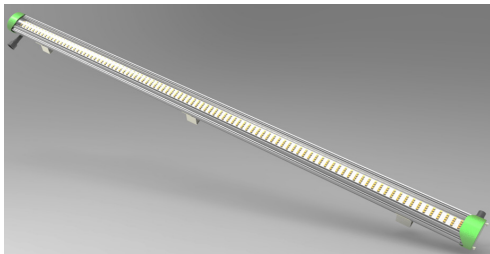


BIOS[®] ICARUS[®] Li 2-Bar Assembly

INDOOR HERB AND
HOME GARDEN



Li 2-Bar P/N: 321-KITS-00012

Residential and Indoor Garden

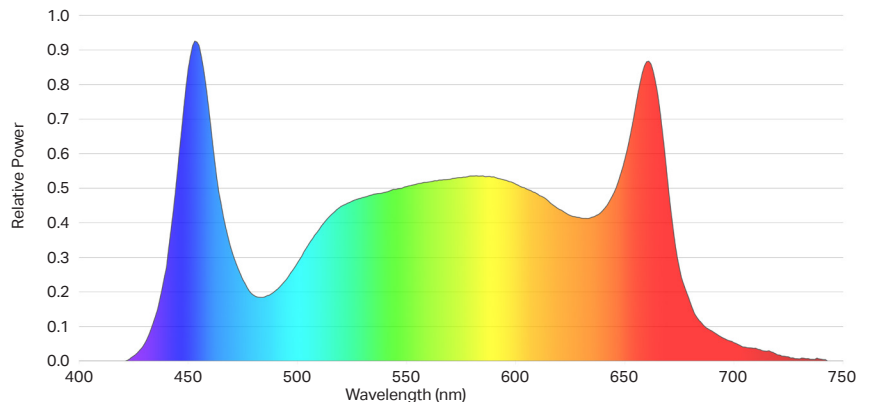
Premium PAR Output and PAR Efficacy

BIOS Icarus Li 2-Bar LED light bars are ideal for residential scale and DIY grow projects including school classroom projects and indoor home gardens. The Icarus Li 2-Bar system is also a cost effective solution for small-scale vertical farming racking systems.

Features and Benefits

- + Slim and lightweight design optimizes space and allows repositioning over the plant canopy for a variety of applications.
- + Metal spring clips allow for easy installation into any racking system.
- + Bars can be connected using quick release connectors to a single power supply.

Scientifically Engineered Spectrum Maximizes Photosynthesis and Growth



Performance Summary*

- + Fixture Wattage: 165Watts
- + Voltage: 90-305VAC
- + Photosynthetic Photon Flux: 400 $\mu\text{mol/s}$
- + PAR Photon Efficacy ($\mu\text{mol PAR/J}$): 2.43 $\mu\text{mol/J}$
- + Ingress Protection: IP65
- + Warranty: 5 Year Limited

* Performance tolerances (+/- 5%)

BIOS[®] Icarus[®] Li

2-Bar Assembly

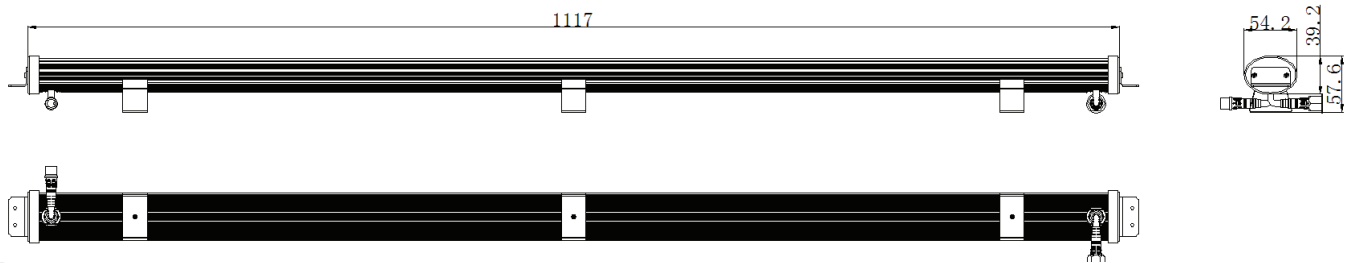
Specifications

APPLICATIONS	Growth Chamber Vertical Farming	FIXTURE WATTAGE	165W
INPUT VOLTAGE	Auto-sensing 90-305VAC	POWER FACTOR	> 95%
FIXTURE SIZE / WEIGHT US	44.0"L x 2.13"W x 2.27"H 3.5 lb	PPF	400 μmol/s
FIXTURE SIZE / WEIGHT M	111.7 cm L x 5.4 cm W x 5.8 cm H 1.6 kg	PAR EFFICACY	2.43 μmol/J
DIMMING PROTOCOL	Linearly 0-10V Dim to Off	THERMAL MANAGEMENT	Passive
HOUSING AND FINISH	Anodized clear	WARRANTY	5 Year Standard Limited
MOUNTING TECHNIQUE	Spring Clips	LIGHT DISTRIBUTION	125 °
MOUNTING HEIGHT	6"-24" Above Plant Canopy	AMBIENT TEMP. RANGE	41°F - 104°F (5°C - 40°C)
SPECTRUM	Photosynthetically Optimized Broad Spectrum	INGRESS PROTECTION	IP65
CERTIFICATIONS	UL8800, RoHS, FCC	PROJECTED LIFETIME	L90: > 56000 hrs

Available Accessories

- + (1) AC Jumper Cable | 321-CABS-00043
- + (1) DC Jumper Cable | 321-CABS-00002
- + (1) NEMA 5-15P | 321-CABS-00040
- + (16) Spring Clips | 321-BRKT-00001
- + (1) NEMA 6-15P | 321-CABS-00041
- + (1) NEMA L6-15P | 321-CABS-00038
- + (1) NEMA L6-20P | 321-CABS-00039
- + (1) NEMA L7-15P | 321-CABS-00042

Product Dimensions (Single Fixture)



Mounting Hardware

Spring Clips | 2 per fixture (included)

