

BIOS[®] LIGHTING ICARUS[®] Li



LED VERTICAL GROW LIGHT BAR

GROWTH CHAMBER & VERTICAL FARMING

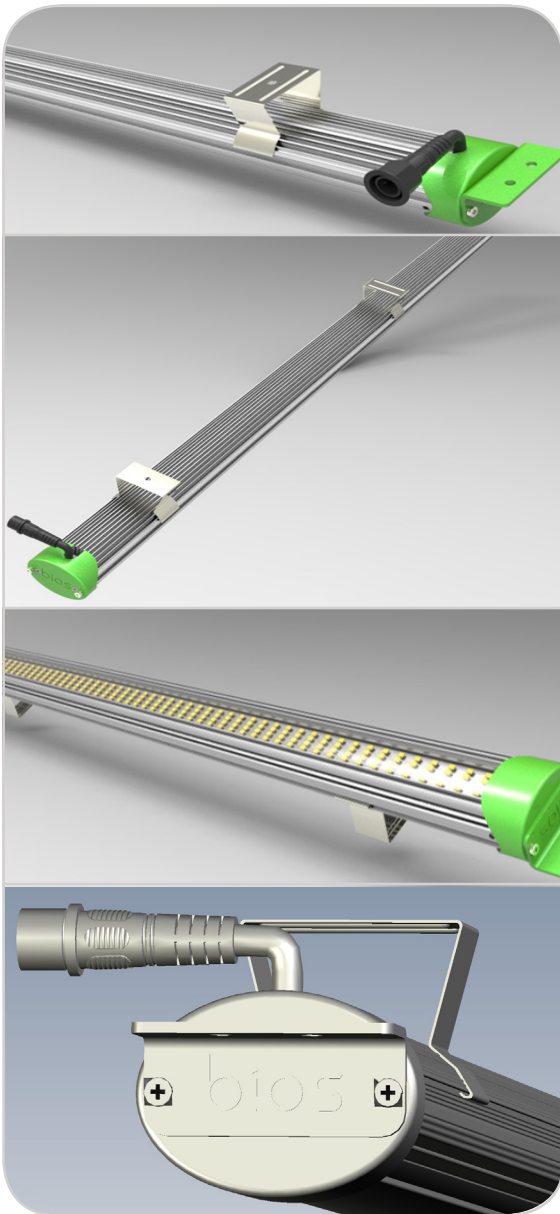
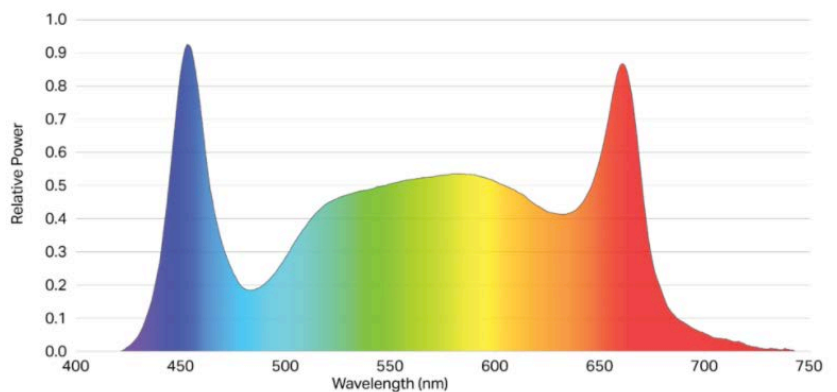
SUPERIOR PAR OUTPUT AND PAR EFFICACY

The BIOS Icarus Li LED grow light bars are a cost effective solution for vertical farming racking systems where multiple bars can be daisy chained and easily arranged according to desired light bar spacing.

FEATURES AND BENEFITS

- Slim, lightweight design optimizes space and allows repositioning over the plant canopy in a variety of applications
- Clip or end-cap L brackets allow easy installation into any racking system
- Bars can be daisy chained by quick release connectors to a single power supply
- LED bars can be installed at various densities to provide PPFD levels up to 1500 $\mu\text{mol}/\text{m}^2\text{-s}$

SCIENTIFICALLY ENGINEERED SPECTRUM TO MAXIMIZE PHOTOSYNTHESIS & GROWTH



Icarus Li grow lights are LED light bars that are easily installed, dimmable, and daisy chained to a shared power supply

Fixture Wattage: **79 Watts**

Voltage: **110-277VAC & 277-480VAC**

Photosynthetic Photon Flux ($\mu\text{mol PAR/s}$): **173 $\mu\text{mol/s}$**

PAR Photon Efficacy ($\mu\text{mol PAR/J}$): **2.2 $\mu\text{mol/J}$**

Ingress Protection: **IP66**

Warranty: **5 Year Limited**

SPECIFICATIONS

Applications	Growth Chamber Vertical Farming
Input Voltage	Autosensing 110-277VAC & 277-480VAC
Fixture Size / Weight US	44"L x 2.13"W x 2.27"H 4.2 lb
Fixture Size / Weight M	111.7 cm L x 5.4 cm W x 5.8 cm H 1.9 kg
Dimming	Linearly 0-10V Dims to Off
Housing and Finish	Anodized clear
Certifications	UL1598, UL 8750, RoHS, FCC
Mounting Technique	Top Clips End-Cap L Brackets
Mounting Height	6-24" Above Plant Canopy
Lifetime	L90: > 36,000 hrs
Spectrum	Photosynthetically Optimized Broad Spectrum

Light Module Wattage	75 W
Fixture Wattage	79 W
Power Factor	> 95%
PPF	173 $\mu\text{mol/s}$
Light Module Efficacy	2.3 $\mu\text{mol/J}$
Fixture Efficacy	2.2 $\mu\text{mol/J}$
Thermal Management	Passive
Warranty	5 Year Standard Limited
Light Distribution	125 °
Ambient Temperature Range	41-104 °F (5-40 °C)
Ingress Protection	IP66

FIXTURE MODULE DRAWING

